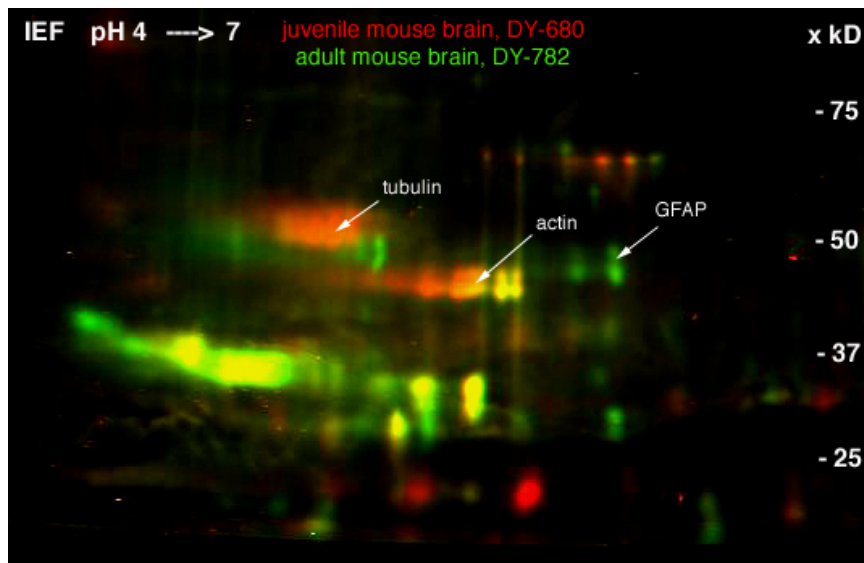


Imaging

Standard multicolour scanners allow the detection of two distinguishable emission signals and work usually in the wavelength range between 532 and 635 nm. Deeper insight / more colours can be obtained with additional excitation sources either in the upper or lower wavelength region.

The picture demonstrates the use of [DY-680-Maleimide](#) and [DY-780-Maleimide](#) in the differential detection of proteins in the NIR region. A more detailed description can be found in the [NIR-application note](#).



Courtesy of Beat Riederer, University of Lausanne